

Meet the members of the PM's Commission on the Future of Nursing and Midwifery

The government has confirmed the commission's line-up, which comprises 17 members from a range of nursing and NHS backgrounds. Nursing Times has spoken to them about their hopes and expectations



ANN KEEN
Health minister



CHRISTINE BEASLEY
Chief nursing officer



GAIL ADAMS
Unison head of nursing

'It is the first opportunity since the Briggs report that we have had to really engage with the profession.'

Ms Adams encouraged nurses to 'get involved' and to start asking their managers' permission now to attend the planned regional consultation events.

'Delivering such a wide reaching report in such a short time-scale is a difficult task,' she said. 'It is important that the time-scale does not restrict the number of people able to take part,' she added.



DR PETER CARTER
RCN general secretary

'Nurses and healthcare assistants have been central to the vast improvements in the health service over recent years and the existence of this commission is recognition of just that.'

'This is the group of health professionals that spends more time with patients than any other, therefore nurses know what's needed in order to deliver high quality patient care'



PROFESSOR ANNE-MARIE RAFFERTY CBE
Head of the Florence Nightingale School of Nursing and Midwifery, King's College London

'It's about taking the NHS Next Stage Review on to the next step, and ensuring the policies around nursing education are implemented. We are a profession that has previously been frustrated in terms of the scope of practice. I think this is about turning these frustrations into freedoms and opportunities'

She added that getting the Prime Minister to focus on nursing was a 'signal note in our history'.



BARONESS AUDREY EMERTON
Former nurse and now cross-bench member of the House of Lords

'Having worked with Lord Darzi last year [on the NHS Next Stage review] and seeing all the things that have been able to be put forward, I think the patient experience is what clearly matters.'

It's the culture change that's going to be difficult but we can overcome it'



JANE SALVAGE
Visiting professor, Florence Nightingale School of Nursing and Midwifery, King's College London

'There are some fantastic things happening in nursing but there are still variations in the quality of care and training.'

'The commission will help to reinforce the direction nursing is taking, as proposed in the NHS Next Stage Review, by looking at broader social policy and frameworks and ensuring frontline care issues are given appropriate attention. It will also help to reduce barriers that inhibit good nursing and midwifery.'



CATHY WARWICK,
RCM general secretary

'I see the issue of midwife numbers as fundamental to the commission. Without the right number of midwives, no review and the changes that it generates will succeed.'

'Identifying the skills and support frontline midwives need to enable them to take a central role in service design is vital. I welcome the focus on nurses and midwives developing and managing their own services.'



HEATHER LAWRENCE
Chief executive, Chelsea and Westminster Hospital NHS Foundation Trust

'There is a lot going on in health care, with academic health science centres, health innovation and education clusters, and increasing use of the third sector – nursing needs to know how it can work in that world.'

Ms Lawrence, who trained as a nurse, said she saw her role on the commission as someone who could 'put everything in context'. She added that nursing must work to establish its position as an 'aspirational' profession.



CLAIRE RAYNER
President of the Patients Association

'For me, the purpose of the commission is to make sure we give patients persistently better and safer care.'

But she also cited her experience on the Royal Commission on Long Term Care of the Elderly, which reported in 1999.

'We thought we came up with good ideas but for various reasons that report remains largely unused.'



JANICE SIGSWORTH
Director of nursing, Imperial College Healthcare NHS Trust



JUDITH GRIFFIN
Chief executive, Blackburn with Darwen PCT



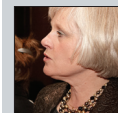
JO PRITCHARD
Joint managing director, Central Surrey Health



DONNA KINNAIR
Director of nursing, Southwark PCT



EILEEN SILLS
Chief nurse, Guy's and St Thomas' NHS Foundation Trust



TAMAR THOMPSON
Director of strategic partnerships, NHS Institute for Innovation and Improvement



JAMES BUCHAN
Queen Margaret University, Edinburgh