

This Provisional PDF corresponds to the article as it appeared upon acceptance. Fully formatted PDF and full text (HTML) versions will be made available soon.

Human fallopian tube: a new source of multipotent adult mesenchymal stem cells discarded in surgical procedures

Journal of Translational Medicine 2009, **7**:46 doi:10.1186/1479-5876-7-46

Tatiana Jazedje (tatiana@ib.usp.br)
Paulo M Perin (paulo@ceerh.com.br)
Carlos E Czeresnia (cec@celulamater.com.br)
Mariangela Maluf (mariangela@ceerh.com.br)
Silvio Halpern (halpern@osite.com.br)
Mariane Secco (marianesecco@usp.br)
Daniela F Bueno (dbueno@usp.br)
Natassia M Vieira (natassia@usp.br)
Eder Zucconi (ezucconi@usp.br)
Mayana Zatz (mayazatz@usp.br)

ISSN 1479-5876

Article type Research

Submission date 20 March 2009

Acceptance date 18 June 2009

Publication date 18 June 2009

Article URL <http://www.translational-medicine.com/content/7/1/46>

This peer-reviewed article was published immediately upon acceptance. It can be downloaded, printed and distributed freely for any purposes (see copyright notice below).

Articles in *JTM* are listed in PubMed and archived at PubMed Central.

For information about publishing your research in *JTM* or any BioMed Central journal, go to

<http://www.translational-medicine.com/info/instructions/>

For information about other BioMed Central publications go to

<http://www.biomedcentral.com/>

© 2009 Jazedje *et al.*, licensee BioMed Central Ltd.

This is an open access article distributed under the terms of the Creative Commons Attribution License (<http://creativecommons.org/licenses/by/2.0>), which permits unrestricted use, distribution, and reproduction in any medium, provided the original work is properly cited.

Human fallopian tube: a new source of multipotent adult mesenchymal stem cells discarded in surgical procedures

(1) Tatiana Jazedje: tatiana@ib.usp.br

(2) Paulo M Perin: paulo@ceerh.com.br

(3) Carlos E Czeresnia: cec@celulamater.com.br

(2) Mariangela Maluf: mariangela@ceerh.com.br

(2) Silvio Halpern: halpern@osite.com.br

(1) Mariane Secco: marianesecco@usp.br

(1) Daniela F Bueno: dbueno@usp.br

(1) Natassia M Vieira: natassia@usp.br

(1) Eder Zucconi: ezucconi@usp.br

(1) * Mayana Zatz: mayazatz@usp.br

(1) Human Genome Research Center, Biosciences Institute, University of São

Paulo, Brazil

Rua do Matão, nº 106, Cidade Universitária

São Paulo – SP, Brazil – CEP: 05508-090

Phone / Fax: (55-11) 3091-7966

⁽²⁾ CEERH – Specialized Center for Human Reproduction, São Paulo, Brazil

Rua Mato Grosso, nº 306 – 19º andar, Higienópolis

São Paulo – SP, Brazil – CEP: 01239-040

⁽³⁾ Celula Mater, São Paulo, Brazil

Al. Gabriel Monteiro da Silva, nº 802

São Paulo – SP, Brazil – CEP: 01442-000

Phone / Fax: (55-11) 30676700

*** Corresponding Author:**

Prof. Mayana Zatz, Ph.D.

Human Genome Research Center, Biosciences Institute, University of São Paulo.

Rua do Matão, n. 106, Cidade Universitária

São Paulo – SP, Brazil - CEP: 05508-090

Phone / Fax: (55-11) 3091-7966

E-mail: mayazatz@usp.br

Abstract

Background: The possibility of using stem cells for regenerative medicine has opened a new field of investigation. The search for sources to obtain multipotent stem cells from discarded tissues or through non-invasive procedures is of great interest. It has been shown that mesenchymal stem cells (MSCs) obtained from umbilical cords, dental pulp and adipose tissue, which are all biological discards, are able to differentiate into muscle, fat, bone and cartilage cell lineages. The aim of this study was to isolate, expand, characterize and assess the differentiation potential of MSCs from human fallopian tubes (hFTs).

Methods: Lineages of hFTs were expanded, had their karyotype analyzed, were characterized by flow cytometry and underwent *in vitro* adipogenic, chondrogenic, osteogenic, and myogenic differentiation.

Results: Here we show for the first time that hFTs, which are discarded after some gynecological procedures, are a rich additional source of MSCs, which we designated as *human tube MSCs* (htMSCs).

Conclusions: Human tube MSCs can be easily isolated, expanded *in vitro*, present a mesenchymal profile and are able to differentiate into muscle, fat, cartilage and bone *in vitro*.

Background

Adult mesenchymal stem cells (MSCs) are typically defined as undifferentiated multipotent cells endowed with the capacity for self-renewal and the potential to differentiate into several distinct cell lineages [1]. These progenitor cells which constitute a reservoir found within the connective tissue of most organs are involved in the maintenance and repair of tissues throughout the postnatal life of an individual. Although functionally heterogeneous, MSC populations isolated from different tissues such as bone marrow, skeletal muscle, lung, adipose tissue, dental pulp, placenta, and the umbilical cord present a similar profile of cell surface receptor expression [2-10]. However, it is also well known that adult stem cells are defined by their functional properties rather than by marker expression [11].

We and others have recently shown that the umbilical cord, dental pulp, orbicular oris muscle and adipose tissue are a very rich source of MSCs able to differentiate into muscle, cartilage, bone and adipose cell lineages [7,10,12-15]. The extraordinary regenerative capacity of the human endometrium following menstruation, in the postpartum period, after surgical procedures (uterine curettage, endometrial ablation) and in postmenopausal women undergoing hormonal replacement therapy suggests that MSC niches present in this tissue could be responsible for this process [16]. Indeed, endometrial and menstrual blood-derived stem cells were recently isolated and showed the ability to differentiate into cell types of the three germ layers [17-23].

The human fallopian tubes (hFTs) share the same embryologic origin as the uterus. They have the capacity to undergo dynamic endocrine-induced changes

during the menstrual cycle, including cell growth and regeneration, in order to provide the unique environment required for the maintenance of male and female gamete viability, fertilization, and early embryo development as well as transport to the uterus [24]. Therefore, based on the experience of our research group in the identification, and characterization of potential sources of adult stem cells [7,10,12-15], the aim of this study was to isolate, expand, characterize and assess the differentiation potential of MSCs from hFTs.

Methods

Human Fallopian Tube Collection and Processing

Human fallopian tubes ($n = 6$) were obtained from hysterectomy or tubal ligation/resection samples collected during the proliferative phase from fertile women in their reproductive years (range 35 – 53 years) who had not undergone exogenous hormonal treatment for at least three months prior to surgery. Informed consent was obtained from each patient and approval granted from by the ethics committee of the Biosciences Institute of the University of São Paulo. All laboratory experiments were carried out at the Human Genome Research Center, São Paulo, Brazil.

Each sample was collected in HEPES-buffered Dulbecco Modified Eagle Medium / Hams F-12 (DMEM/F-12; Invitrogen, Carlsbad, CA) or DMEM high glucose (DMEM/High; Invitrogen, Carlsbad, CA) supplemented with 10% fetal bovine serum (FBS; HyClone, Logan, UT), kept in 4°C and processed within 24

hours period. All hFTs samples were washed twice in phosphate saline buffer (PBS, Gibco, Invitrogen, Carlsbad, CA), finely minced with a scalpel, put inside a 15 or 50 mL falcon, and incubated in 5 ml of pure TripLE Express, (Invitrogen, Carlsbad, CA) for 30 minutes, at 37°C, in a water bath. Subsequently, supernatant was removed with a sterile Pasteur pipette, washed once with 7 mL of DMEM/F-12 supplemented with 10% FBS in a 15 mL falcon, and pelleted by centrifugation at 400g for five minutes at room temperature. Cells were then plated in DMEM/F-12 (5mL) supplemented with 10% FBS, 100 IU/mL penicillin (Invitrogen) and 100 IU/mL streptomycin (Invitrogen, Carlsbad, CA) in plastic flasks (25cm²), and maintained in a humidified atmosphere of 5% CO₂ in air at 37°C. The culture medium used for expansion was initially changed every 72 hours and routinely replaced twice a week thereafter.

Population Doubling (PD) and Karyotypic Analysis

PD experiments were carried out to verify the growth rate of cell lineages for at least five consecutive days, both during the process of establishment and long-term passages. To calculate the growth rate the methodology previously described by Deasy *et al.* was used [25].

Karyotypic analysis of cells from the same lineages undergoing PD experiments was performed to verify maintenance of chromosomal normality. Cells were cultured for one hour in colchicine (0.1µg/mL), detached using TripLE Express (Invitrogen, Carlsbad, CA), washed in PBS (Gibco - Invitrogen, Carlsbad, CA), and resuspended in 0.5 mL of medium and mixed with .075 M KCl to a volume

of 10 mL. After incubation for 20 minutes at 37°C in a water bath, the cells were centrifuged at 400g for five minutes and the pellet fixed three times in 1 mL of cold Carnoy's fixative. Three drops of cell suspension were fixed per slide. For chromosome counting the slides were stained in Giemsa for 15 minutes and photographed in a phase-contrast microscope (Ikaros System, Axiophot 2, Carl Zeiss, Jena, Germany)

Flow Cytometry Analysis

Flow cytometry analysis was performed using a Guava EasyCyte microcapillary flow cytometer (Guava Technologies, Hayward, CA) utilizing laser excitation and emission wavelengths of 488 and 532 nm, respectively. Cells were pelleted, resuspended in PBS (Gibco - Invitrogen, Carlsbad, CA) at a concentration of 1.0×10^5 cells/mL and stained with saturating concentration of antibodies. After 45 minute incubation in the dark at room temperature, cells were washed three times with PBS (Gibco, Invitrogen, Carlsbad, CA) and resuspended in 0.25mL of cold PBS.

In order to analyze cell surface expression of typical protein markers, adherent cells were treated with the following anti-human primary antibodies: CD13-phycoerythrin [PE] (Becton Dickinson, Franklin Lakes, NJ), CD14 (VMRD Inc., Pullman, WA), CD29-PE-Cy5, CD31-PE, CD34-PerCP, CD38-fluorescein isothiocyanate [FITC], CD44-FITC, CD45-FITC, CD73-PE, CD90-R-PE, CD117-PE (Becton Dickinson, Franklin Lakes, NJ), CD133-PE (Miltenyi Biotec, Gladbach, Germany), human leukocyte antigens (HLA)-ABC-FITC and HLA-

DR-R-PE (Becton Dickinson, Franklin Lakes, NJ), SSEA4 (Chemicon, Temecula, CA), STRO1 (R&D Systems, Minneapolis, MN), and SH2, SH3 and SH4 (kindly provided by Dr. Kerkis, Butantan Institute, São Paulo, Brazil). Unconjugated markers were reacted with anti-mouse PE secondary antibody (Guava Technologies, Hayward, CA). Unstained cells were gated on forward scatter to eliminate particulate debris and clumped cells. A minimum of 5.000 events were counted for each sample.

Mesenchymal Stem Cell Differentiation

To evaluate the properties of mesenchymal stem cell differentiation, adherent cells (3rd and 11th passages) underwent *in vitro* adipogenic, chondrogenic, osteogenic, and myogenic differentiation according to the following protocols:

Adipogenic Differentiation. The adipogenic differentiation capacity of culture-expanded hFTs cells was determined as previously reported [26]. Cultured-expanded cells from hFTs were cultured in proliferation medium supplemented with 1 μ M dexamethasone, 500 μ M 3-isobutyl-1-methylxanthine, 60 μ M indomethacin, and 5 μ g/mL insulin (Sigma-Aldrich, St. Louis, MO). Confirmation of adipogenic differentiation was obtained on day 21 by intracellular accumulation of lipid-rich vacuoles stainable with oil red O (Sigma-Aldrich, St. Louis, MO). For the oil red O stain cells were fixed with 4% paraformaldehyde (PFA) for 30 minutes, washed, and stained with a working solution of 0.16% oil red O for 20 minutes.

Chondrogenic Differentiation. Approximately 2.5×10^5 hFTs were centrifuged in a 15 mL polystyrene tube at 500g for five minutes, and the pellet resuspended in 10 mL of basal medium. The basal medium consisted of DMEM/High (Invitrogen, Carlsbad, CA) supplemented with 1% ITS-Premix (Becton Dickinson, Franklin Lakes, NJ), 1% 10 mM dexamethasone (Sigma-Aldrich, St. Louis, MO), 1% 100 mM sodium pyruvate (Gibco - Invitrogen, Carlsbad, CA), and 1% 5 mM ascorbic acid-2 phosphate (Sigma-Aldrich, St. Louis, MO). Without disturbing the pellet, cells were resuspended in 0.5 mL of chondrogenic differentiation medium, consisting of the basal medium supplemented with 10 ng/mL transforming growth factor (TGF) β 1 (R&D Systems, Minneapolis, MN) and 10% FBS, maintained in a humidified atmosphere of 5% CO₂ in air at 37°C. On day one, tubes were gently turned over to acquire a single floating cell sphere. Medium was changed every three or four days. On day 21, samples were fixed in 10% formalin for 24 hours at 4°C and paraffin-embedded. Cryosections (5 μ m thick) were cut from the harvested micromasses and stained with toluidine blue to demonstrate extracellular matrix mucopolysaccharides [14].

Osteogenic Differentiation. Osteogenic differentiation was obtained by culturing hFTs cells in DMEM low glucose (DMEM/LG; Invitrogen, Carlsbad, CA) supplemented with 0.1 mM dexamethasone and 50 mM ascorbic acid-2 phosphate (both Sigma-Aldrich, St. Louis, MO) and maintained in a humidified atmosphere of 5% CO₂ in air at 37°C. On day nine, 10 mM β -glycerolphosphate

was added to induce mineralization. Osteogenic differentiation was shown by formation of calcium-hydroxyapatite-positive areas (von Kossa staining) on day 21. After two washes with PBS (Gibco - Invitrogen, Carlsbad, CA) and one with distilled water, the cells were incubated in 1% silver nitrate (Sigma-Aldrich, St. Louis, MO) under ultraviolet light for 45 minutes. The cells were then incubated in 3% sodium thiosulfate (Sigma-Aldrich, St. Louis, MO) for 5 minutes. Counterstaining was finally performed with Van Gieson [14]. The calcium accumulation was indicated by dark color.

Myogenic Differentiation. For myogenic differentiation hFTs cells were cultured in myogenic differentiation medium consisting of 50% induction medium and 50% fresh DMEM/F-12 (Invitrogen, Carlsbad, CA) supplemented with 10% FBS (HyClone, Logan, UT) in a humidified atmosphere of 5% CO₂ in air at 37°C. Proliferation medium, which consists of DMEM/F-12 supplemented with 10% FBS, 100 IU/mL penicillin (Invitrogen, Carlsbad, CA), and 100 IU/mL streptomycin (Invitrogen, Carlsbad, CA), is in fact the same medium used previously to cultivate primary human myoblasts for 48 hours. Prior to its use, induction medium was filtered through a 0.22 µm pore membrane filter (Millipore, Billerica, MA) and pH was adjusted with sodium bicarbonate (Sigma-Aldrich, St. Louis, MO). The hFTs MSCs were cultured for 40 days and the medium changed twice a week. After this interval, cells were analyzed using Immunofluorescence (IF) and Western blot (WB) testing.

Immunofluorescence and Western Blot Analysis

Immunofluorescence (IF). Immunofluorescence localization of dystrophin was performed on muscle-differentiated hFTs cells to confirm myogenic differentiation. Cells were washed twice with cold PBS (Gibco - Invitrogen, Carlsbad, CA), fixed with 4% PFA/PBS for 20 minutes at 4°C, and permeabilized with .05% Triton X-100 (TX-100; Sigma-Aldrich, St. Louis, MO) in PBS (Gibco - Invitrogen, Carlsbad, CA) for five minutes. After blocking non-specific binding 10% FBS/PBS (Invitrogen, Carlsbad, CA) for one hour at room temperature, incubations with the primary antibody (anti-dystrophin; Ab15277; Abcam, Cambridge, UK) overnight at 4°C and the secondary antibody (FITC IgG; Chemicon, Temecula, CA) for one hour at room temperature were performed. Nuclei were counterstained with 4',6-diamidino-2-phenylindole (DAPI; Sigma-Aldrich, St. Louis, MO) for visualization. As positive controls, we used normal human differentiated myotubes cultures. As negative controls, we used non-differentiated htMSCs. The immunofluorescence slides were examined using an Axiovert 200 microscope (Axio Imager Z1, Carl Zeiss, Oberkochen, Germany).

Western Blot. Proteins of muscle-differentiated hFTs cells were extracted by treatment with a buffer containing 10 mM Tris-HCL [pH 8.0], 150 mM NaCl , 5 mM EDTA, 1% TX-100 , and 60 mM octyl glucoside (Sigma-Aldrich, St. Louis, MO). Samples were centrifuged at 13.000g for 10 minutes to remove insoluble

debris. Proteins were separated by sodium dodecyl sulfate-polyacrylamide gel electrophoresis (SDS-PAGE 6%) and transferred onto nitrocellulose membranes (Amersham Biosciences, Piscataway, NJ). All membranes were stained with 0.2% Ponceau S (Sigma-Aldrich) to evaluate the amount of loaded proteins. Membranes were blocked for one hour at room temperature with 5% milk powder in Tris-buffered saline with Tween 20 detergent (TBST, 20 mM Tris-HCL, 500 mM NaCl, .05% Tween 20) and treated overnight with anti-dystrophin (VP-D508; Vector Laboratories, Burlingame, CA) and anti-skeletal myosin (M7523; Sigma-Aldrich, St. Louis, MO) primary antibodies. The following day, membranes were incubated for one hour at room temperature with peroxidase-conjugated anti-mouse and anti-rabbit IgG secondary antibodies (GE Healthcare, Piscataway, NJ) as recommended by the manufacturer. Immunoreactive bands were detected using the Enhanced Chemoluminescence Detection System (GE Healthcare, Piscataway, NJ).

Results

Lineages Expansion, Population Doubling (PD) and Karyotype analysis

After plating hFTs cells, different cell types were observed but most were spindle-shaped, resembling fibroblasts. Some clusters of cells with endothelial appearance, which spread weakly, could also be observed (figure 1). After the first enzymatic dissociation, usually between 5-7 days of culture, adherent cells were constituted of homogeneous cell layers with a MSC-like phenotype. All

lineages were expanded, frozen and thawed several times. PD experiments showed high rates of cell division and karyotypic analysis showed no evidence of chromosomal abnormalities (figure 2).

Flow Cytometry Analysis

All adherent cells derived from hFTs did not express hematopoietic lineage markers (CD34, CD38, CD45, CD117 and CD133), endothelial marker CD31 and monocyte marker (CD14). In addition, the majority of cells expressed high levels of adhesion markers (CD29, CD44 and CD90) and MSCs markers (CD13, CD73, SH2, SH3 and SH4). The isolated cells from hFTs were also positive for HLA-class I (HLA-ABC) but negative for HLA-class II (HLA-DR), and negative as well for the embryonic stem cell factor SSEA4 and the presumed MSC marker Stro1.

For a comparative investigation, we provided a cytometry analysis of freshly digested and not cultured hFT, where we used 9 mesenchymal stem cells markers (CD13, CD29, CD44, CD73, CD90, Stro-1, SH2, SH3 and SH4), as well as tissue specific markers (CD14, CD31 and CD34).

The cytometry analysis summarized in figure 3 shows the mesenchymal profile for hFTs cells. Additionally, MSC properties of isolated cells were further confirmed with cell differentiation studies. Surprisingly, CD29 and CD44 were positively expressed in htMSC and in freshly digested and not cultured hFTs.

Multilineage Differentiation

The plasticity of adherent cells obtained from hFTs was assessed three weeks after mesodermal induction for osteogenic, adipogenic, and chondrogenic differentiation. The multilineage differentiation was performed for 5 independent lineages of htMSCs, and no evident difference in their differentiation potential was observed between them. In addition, the potential for hFTs cells to differentiate into skeletal muscle cells was investigated after 40 days of culture in induction medium. The myogenic differentiation was demonstrated by the expression of myogenic markers (myosin and dystrophin). The hFTs cells differentiated in myogenic, adipogenic, chondrogenic, and osteogenic tissues *in vitro* (figure 4). Together, these results confirmed the mesenchymal nature of the isolated cells and their multipotency.

Discussion

The possibility of using stem cells for regenerative medicine has opened a new field of investigation to find the best sources for obtaining multipotent stem cells, in particular through non-invasive procedures.

Initially defined as bone marrow precursors, new evidence suggests that MSCs are present in virtually all organs playing a possibly important role in tissue maintenance and regeneration [27,28-31]. More recently, they were also found in the human uterus endometrium and in menstrual blood and have been shown capable of promoting regeneration *in vivo* [16,18,19,21,22,32,33]. A recent study demonstrated isolating stem cells from the endometrium and promoting *in vitro* chondrogenesis [20].

It has been shown that MSCs obtained from the umbilical cord, dental pulp, adipose tissue and menstrual blood, all biological discards, are able to differentiate into muscle, fat, bone and cartilage cell lineages [7,10,12-15]. Here we show for the first time that the hFTs, which are discarded in hysterectomy procedures, are an additional source rich in MSCs, which we designated as *human tube MSCs* (htMSCs). Early passage htMSCs had longer PD times (approximately 15 hours). However, with additional passages, PD times shortened and stabilized. Although htMSCs proliferate extensively in culture, comparative analysis of the cells' karyotypes from early (second) and late (eleventh) passages showed no abnormalities, suggesting chromosomal stability throughout the passages.

Although Nasef *et al.* suggest that a purified Stro-1-enriched population augment the suppressive effect in allogeneic transplantation, Murphy *et al.* showed that allogeneic endometrial regenerative cells (ERC or menstrual blood mesenchymal stem cells), that are Stro-1 negative, were efficient for the treatment of critical limb ischemia in rats [34,32]. In accordance to recent studies in human endometrium, htMSCs are also Stro1 negative [35]. In other hand, CD44, which is considered a marker of MSCs and has been shown to be critical for the recruitment of MSCs into wound sites for tissue regeneration, was highly expressed in htMSCs and also in the fresh digested fallopian tube tissue [36,37]. CD29, an integrin involved in cell adhesion was also greatly expressed in all htMSCs studied lineages, including freshly digested samples. Curiously, according to evidences from recent studies, this molecule may be involved in the fertilization process, allowing the binding and fusion of sperm and egg [38]. However, speculation that htMSCs may play a role in reproduction remains to

be elucidated. Anyway, the high levels of expression of adhesion markers (CD29, CD44 and CD90) and other MSC markers (CD13, CD73, SH2, SH3 and SH4) together with the multilineage differentiation results confirmed the mesenchymal nature of human fallopian tube stem cells. These important features imply that htMSCs represent a cell population that can be rapidly expanded for potential clinical applications.

The morphological and functional integrity of the tubal epithelium are of paramount importance for the development of a unique microenvironment required for optimal fertilization and early embryo development. They are therefore essential for successful implantation as evidenced by a recent meta-analysis showing that the use of human oviductal cells for co-culture improves embryo morphology, implantation rates and pregnancy success [39].

Anatomically the hFTs are divided into four distinct segments (intramural, isthmic, ampulla, and infundibulum/fimbria) each one comprised of different populations of epithelial cells and distinct secretory activity [40]. Bacteria and viruses constantly found in the lumen of the vagina may sporadically enter the upper reproductive tract disrupting the hFTs epithelial integrity, and represent a significant risk factor to female reproductive health. The need of a strict homeostasis of hFT environment in order to avoid the disruption of the reproductive function suggests that MSC niches present in this tissue could be responsible for this process [41,42].

Recently, Wolff *et al.* were able to demonstrate the presence of endometrial multipotent cells by inducing chondrogenic differentiation *in vitro* of a subpopulation of endometrial stromal cells [20]. However, using non-

endometrial gynecologic tissue such as myometrium, fallopian tube, and uterosacral ligaments as controls, they could not demonstrate chondrogenesis. This suggests that there may be less progenitor stem cells in these tissues due to their lower burden of lifelong regeneration compared with the endometrium; or that the differentiation assay employed in their study was not appropriate for these tissues. Based on our success in obtaining myogenic, adipogenic, osteogenic, and chondrogenic differentiation from htMSCs we may presume that the inability to demonstrate chondrogenesis from fallopian tube tissue reported by Wolff *et al.* could be related to methodological issues rather than to progenitor stem cell concentration.

Conclusions

Human tissue fragments that are usually discarded in surgical procedures may represent important sources of stem cells and their use does not pose ethical problems. This is the first study to demonstrate the isolation, *in vitro* expansion, and differentiation into muscle, fat, cartilage, and bone of a new rich source of mesenchymal progenitor cells from normal adult hFTs. Tissue fragments of hFTs, which are usually discarded after surgical procedures, may represent a new potential source of pluripotent cells for regenerative medicine. The identification of niches of tissue-specific stem cells capable of replacing damaged differentiated cells in the hFTs may contribute to provide the unique environment required for the maintenance of male and female gamete viability, fertilization, and early embryo development and transport to the uterus, altogether necessary for a successful reproductive outcome.

Competing interest

The authors declare that they have no competing interests.

Author's contribution

TJ and MZ conceived the study. PMP, CEC, MM and SH provide human tubes from surgical procedures. TJ, MZ, PMP, CEC, MM and SH wrote the manuscript. TJ designed and performed tissue cultures, Western Blotting and Immunofluorescence. MS, EZ and NMV helped with flow cytometric evaluation and with the manuscript review. DFB helped with osteogenic and chondrogenic differentiation. All authors read and approved the final manuscript.

Acknowledgments

We would like to thank: Dr. Marília Trierveiler Martins for the chondrogenic analysis and pictures; Dr. Célia Koiffmann and Cláudia I. E. de Castro for karyotype analysis and pictures; Marta Cánovas for technical support; Dr. Mariz Vainzof for WB analysis and suggestions; Dr. Irina Kerkis for antibodies supplying; Marcos Valadares and Maria Denise Fernandes Carvalho for the support with the cultures. Mrs. Constanca Urbani for secretarial assistance. FAPESP/CEPID, CNPq and FUSP.

References

1. Dominici M, Le Blanc K, Mueller I, Slaper-Cortenbach I, Marini F, Krause D, Deans R, Keating A, Prockop Dj, Horwitz E: **Minimal criteria for defining multipotent mesenchymal stromal cells. The International Society for Cellular Therapy position statement.** *Cytotherapy* 2006, **8**: 315-317.
2. Bobis S, Jarocha D, Majka M: **Mesenchymal stem cells: characteristics and clinical applications.** *Folia Histochem Cytobiol* 2006, **44**: 215-230.
3. Phinney D, Prockop D: **Mesenchymal stem/multipotent stromal cells: the state of transdifferentiation and modes of tissue repair - current views.** *Stem Cells* 2007, **25**:2896-28902.
4. Valtieri M, Sorrentino A: **The mesenchymal stromal cell contribution to homeostasis.** *J Cell Physiol* 2008, **217**:296-300.
5. Tare R, Babister J, Kanczler J, Kanczler J, Oreffo RO: **Skeletal stem cells: phenotype, biology and environmental niches informing tissue regeneration.** *Mol Cell Endocrinol* 2008, **288**:11-21.
6. Warburton D, Perin L, Defilippo R, Bellusci S, Shi W, Driscoll B: **Stem/progenitor cells in lung development, injury repair, and regeneration.** *Proc Am Thorac Soc* 2008, **6**:703-706.
7. Vieira NM, Brandalise V, Zucconi E6:, Jazedje T, Secco M, Nunes VA, Strauss BE, Vainzof M, Zatz M: **Human multipotent adipose-derived**

- stem cells restore dystrophin expression of Duchenne skeletal-muscle cells in vitro.** *Biol Cell* 2008, **4**:231-241.
8. Costa A, Bueno D, Martins M, Kerkis I, Kerkis A, Fanganiello RD, Cerruti H, Alonso N, Passos-Bueno MR: **Reconstruction of large cranial defects in nonimmunosuppressed experimental design with human dental pulp stem cells.** *J Craniofac Surg* 2008, **1**:204-210.
 9. Evangelista M, Soncini M, Parolini O: **Placenta-derived stem cells: new hope for cell therapy?** *Cytotechnology* 2008, **1**:33-42.
 10. Secco M, Zucconi E, Vieira NM, Fogaça LL, Cerqueira A, Carvalho MD, Jazedje T, Okamoto OK, Muotri AR, Zatz M: **Multipotent stem cells from umbilical cord: cord is richer than blood!** *Stem Cells* 2008, **1**:146-150.
 11. Zhang MJ, Liu B, Xia W, Sun ZY, Lu KH: **Could cells from menstrual blood be a new source for cell-based therapies?** *Med Hypotheses* 2009, **72**:252-254.
 12. Secco M, Zucconi E, Vieira NM, Fogaça LL, Cerqueira A, Carvalho MD, Jazedje T, Okamoto OK, Muotri AR, Zatz M: **Mesenchymal stem cells from umbilical cord: do not discard the cord!** *Neuromuscul Disord* 2008, **1**:17-18.
 13. Vieira NM, Bueno CR Jr, Brandalise V, Moraes LV, Zucconi E, Secco M, Suzuki MF, Camargo MM, Bartolini P, Brum PC, Vainzof M, Zatz M: **SJL dystrophic mice express a significant amount of human muscle proteins following systemic delivery of human adipose-derived**

- stromal cells without immunosuppression.** *Stem Cells* 2008, **9**:2391-2398.
14. Bueno DF, Kerkis I, Costa AM, Martins MT, Kobayashi GS, Zucconi E, Fanganiello RD, Salles FT, Almeida AB, do Amaral CE, Alonso N, Passos-Bueno MR: **New Source of Muscle-Derived Stem Cells with Potential for Alveolar Bone Reconstruction in Cleft Lip and/or Palate Patients.** *Tissue Eng Part* , in press.
15. de Mendonça Costa A, Bueno DF, Martins MT, Kerkis I, Kerkis A, Fanganiello RD, Cerruti H, Alonso N, Passos-Bueno MR: **Reconstruction of large cranial defects in nonimmunosuppressed experimental design with human dental pulp stem cells.** *J Craniofac Surg* 2008, **1**:204-210.
16. Gargett C: **Uterine stem cells: what is the evidence?** *Hum Reprod Update* 2007, **1**:87-101.
17. Cervelló I, Martínez-Conejero J, Horcajadas J, Pellicer A, Simón C: **Identification, characterization and co-localization of label-retaining cell population in mouse endometrium with typical undifferentiated markers.** *Hum Reprod* 2007, **1**:45-51.
18. Gargett CE, Chan RW, Schwab KE: **Endometrial stem cells.** *Curr Opin Obstet Gynecol* 2007, **4**:377-383.
19. Meng X, Ichim TE, Zhong J, Rogers A, Yin Z, Jackson J, Wang H, Ge W, Bogin V, Chan KW, Thébaud B, Riordan NH: **Endometrial regenerative cells: a novel stem cell population.** *J Transl Med* 2007, **5**:57.

20. Wolff E, Wolff A, Du H, Taylor HS: **Demonstration of multipotent stem cells in the adult human endometrium by in vitro chondrogenesis.** *Reprod Sci* 2007, **14**:524-533.
21. Schwab KE, Hutchinson P, Gargett CE: **Identification of surface markers for prospective isolation of human endometrial stromal colony-forming cells.** *Hum Reprod* 2008, **23**:934-943.
22. Patel AN, Park E, Kuzman M, Benetti F, Silva FJ, Allickson JG: **Multipotent menstrual blood stromal stem cells: isolation, characterization, and differentiation.** *Cell Transplant* 2008, **17**:303-311; Erratum in: *Cell Transplant* 2008, **17**:721 and *Cell Transplant* 2008, **17**:875.
23. Musina R, Belyavski A, Tarusova O, Solovyova EV, Sukhikh GT: **Endometrial mesenchymal stem cells isolated from the menstrual blood.** *Bull Exp Biol Med* 2008, **145**:539-543.
24. Lyons R, Saridogan E, Djahanbakhch O: **The reproductive significance of human Fallopian tube cilia.** *Hum Reprod Update* 2006, **12**:363-372.
25. Deasy BM, Gharaibeh BM, Pollett JB, Jones MM, Lucas MA, Kanda Y, Huard J. **Long-term self-renewal of postnatal muscle-derived stem cells.** *Mol Biol Cell* 2005, **16**:3323-3333.
26. Zuk PA, Zhu M, Ashjian P, De Ugarte DA, Huang JI, Mizuno H, Alfonso ZC, Fraser JK, Benhaim P, Hedrick MH: **Human adipose tissue is a source of multipotent stem cells.** *Mol Biol Cell* 2002, **12**:4279-4295.

27. Friedenstein AJ, Chailakhjan RK, Lalykina KS: **The development of fibroblast colonies in monolayer cultures of guinea-pig bone marrow and spleen cells.** *Cell Tissue Kinet* 1970, **3**:393-403.
28. da Silva Meirelles L, Chagastelles PC, Nardi NB: **Mesenchymal stem cells reside in virtually all post-natal organs and tissues.** *J Cell Sci* 2006, **119**:2204-2213.
29. da Silva Meirelles L, Caplan AI, Nardi NB: **In search of the in vivo identity of mesenchymal stem cells.** *Stem Cells* 2008, **26**:2287-2299.
30. Krampera M, Marconi S, Pasini A, Galiè M, Rigotti G, Mosna F, Tinelli M, Lovato L, Anghileri E, Andreini A, Pizzolo G, Sbarbati A, Bonetti B: **Induction of neural-like differentiation in human mesenchymal stem cells derived from bone marrow, fat, spleen and thymus.** *Bone* 2007, **40**:382-390.
31. Prunet-Marcassus B, Cousin B, Caton D, André M, Pénicaud L, Casteilla L: **From heterogeneity to plasticity in adipose tissues: site-specific differences.** *Exp Cell Res* 2006, **312**:727-736.
32. Murphy MP, Wang H, Patel AN, Kambhampati S, Angle N, Chan K, Marleau AM, Pyszniak A, Carrier E, Ichim TE, Riordan NH: **Allogeneic endometrial regenerative cells: an "Off the shelf solution" for critical limb ischemia?** *J Transl Med* 2008, **6**:45.
33. Hida N, Nishiyama N, Miyoshi S, Kira S, Segawa K, Uyama T, Mori T, Miyado K, Ikegami Y, Cui C, Kiyono T, Kyo S, Shimizu T, Okano T, Sakamoto M, Ogawa S, Umezawa A: **Novel cardiac precursor-like cells from human menstrual blood-derived mesenchymal cells.** *Stem Cells* 2008, **26**:1695-1704.

34. Nasef A, Zhang YZ, Mazurier C, Bouchet S, Bensidhoum M, Francois S, Gorin NC, Lopez M, Thierry D, Fouillard L, Chapel A: **Selected Stro-1-enriched bone marrow stromal cells display a major suppressive effect on lymphocyte proliferation.** *Int J Lab Hematol.* 2009, **31**:9-19.
35. Gargett CE, Schwab KE, Zillwood RM, Nguyen HP, Wu D: **Isolation and Culture of Epithelial Progenitors and Mesenchymal Stem Cells from Human Endometrium.** *Biol Reprod.* 2009, **80**:1136-1145.
36. Krause DS, Lazarides K, von Andrian UH, Van Etten RA: **Requirement for CD44 in homing and engraftment of BCR-ABL-expressing leukemic stem cells.** *Nat Med* 2006, **12**:1175-1180.
37. Zhu H, Mitsuhashi N, Klein A, Barsky LW, Weinberg K, Barr ML, Demetriou A, Wu GD: **The role of the hyaluronan receptor CD44 in mesenchymal stem cell migration in the extracellular matrix.** *Stem Cells* 2006, **24**:928 –935.
38. Fábryová K, Simon M: **Function of the cell surface molecules (CD molecules) in the reproduction processes** *Gen Physiol Biophys* 2009 **28**:1-7.
39. Kattal N, Cohen J, Barmat L: **Role of coculture in human in vitro fertilization: a meta-analysis:** *Fertil Steril* 2008, **90**:1069-1076.
40. Palter S, Mulayim N, Senturk L, Arici A: **Interleukin-8 in the human fallopian tube:** *J Clin Endocrinol Metab* 2001, **86**:2660-26676.
41. Quayle AJ: **The innate and early immune response to pathogen challenge in the female genital tract and the pivotal role of epithelial cells.** *J Reprod Immunol* 2002, **57**:61-79.

42. Fahey JV, Schaefer TM, Channon JY, Wira, CR: **Secretion of cytokines and chemokines by polarized human epithelial cells from the female reproductive tract.** *Hum Reprod* 2005, **20**:1439-1446.

Legends

Figure 1: Morphology of adherent cells when isolated from hFTs (primary cultures). **A):** Cells cultured for three days after initial plating. Cells with an MSC-like phenotype and a small cluster of cells with endothelial appearance (arrows) (100x). **B):** Cells cultured for six days after initial plating (100x). **C)** Cells cultured for six days after initial plating (400x). (Microscope Zeiss Axiovert 200).

Figure 2: Population doubling and karyotypic analysis. Panel A) Results of hFTs lineage in passage two. Panel B) Results of hFTs lineage in passage 11. We observed high rates of cell division, with gradual decreasing of the population doubling time (PDT) in lineages cultured for a long time. Despite that, no evidence of chromosomal abnormality was observed (Ikaros System, Axiophot 2, Carl Zeiss).

Figure 3: Cytometry analysis of htMSCs. Panel A) Analyzed markers, its commitment, its expression (positive or negative) in fresh digested hFTs and in htMSCs, and the mean percentage of positive labeled cells and analyzed by flow cytometry (GuavaTechnologies, Hayward, CA, <http://www.guavatechnologies.com>). NP means “not performed”. Panel B) Related graphs, where it is possible to compare, for each of the 19 analyzed markers, the control sample (not labeled htMSCs) in gray and the experimental population of htMSCs (labeled with specific antibodies) in black.

Figure 4: Multilineage differentiation *in vitro*. Panel 1) Myogenic differentiation. *K* represents Kaleidoscope (BioRad, molecular marker), *nC* represents normal control of human skeletal muscle, *T* represents htMSCs control, *Tm* represents

hFTs cells induced for myogenic differentiation. 1A) Dystrophin expression in muscle control and in the induced hFTs cells. 1B) Skeletal myosin expression in muscle control and in the induced hFTs cells. 1C) Myosin band observed in the muscle control and in the induced hFTs cells by Ponceau S membrane dyeing. 1D) IF assay, indicating dystrophin expression (in green fluorescence) in myotubes differentiated from hFTs cells, where nucleuses were colored with DAPI (blue fluorescence) (400X). Panel 2) Osteogenic, chondrogenic and adipogenic differentiation of hFTs cells. 2A) Control hFTs cells (630x). 2B) Osteogenic differentiation (200x). 2C) Chondrogenic differentiation (100x). 2D) Adipogenic differentiation (630x) (Microscope Zeiss Axiovert 200).

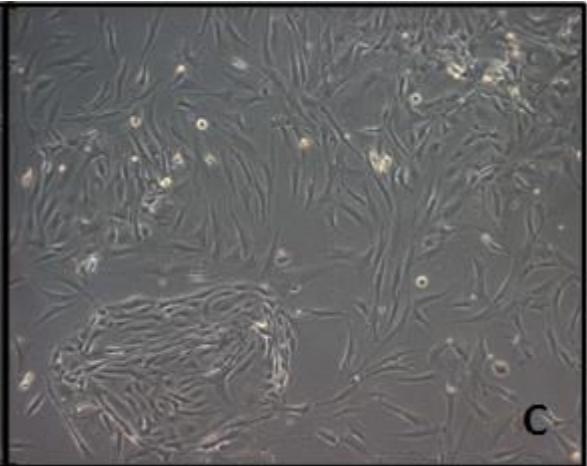
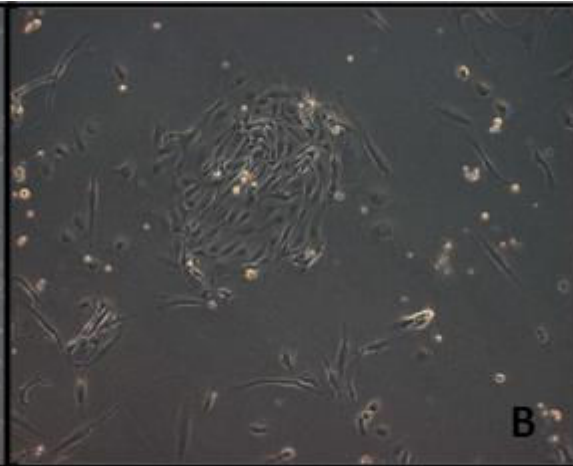


Figure 1

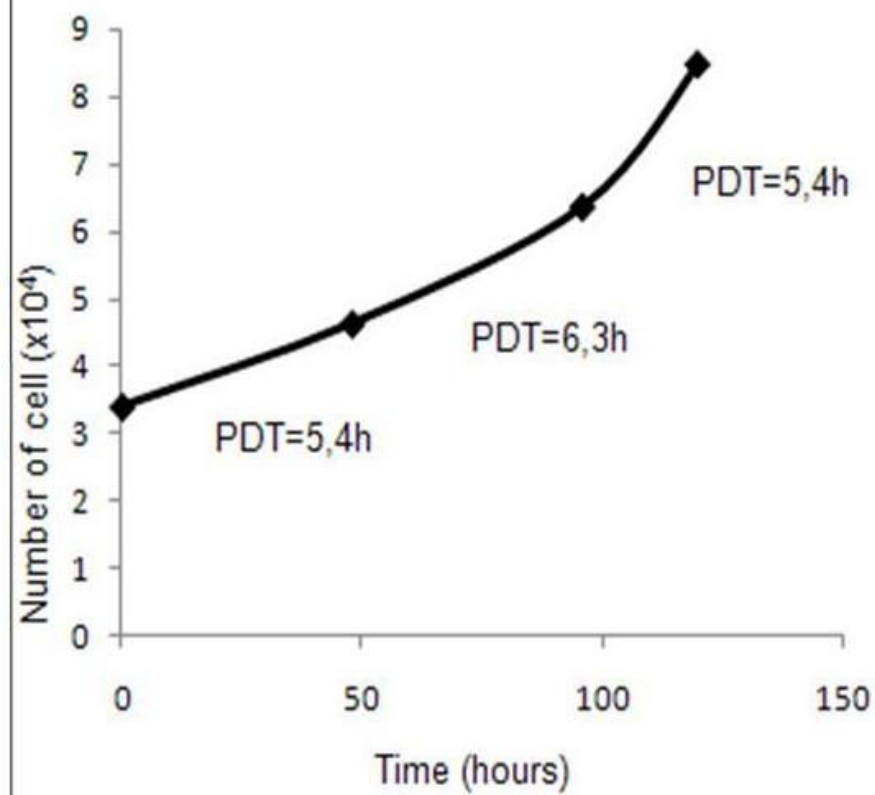
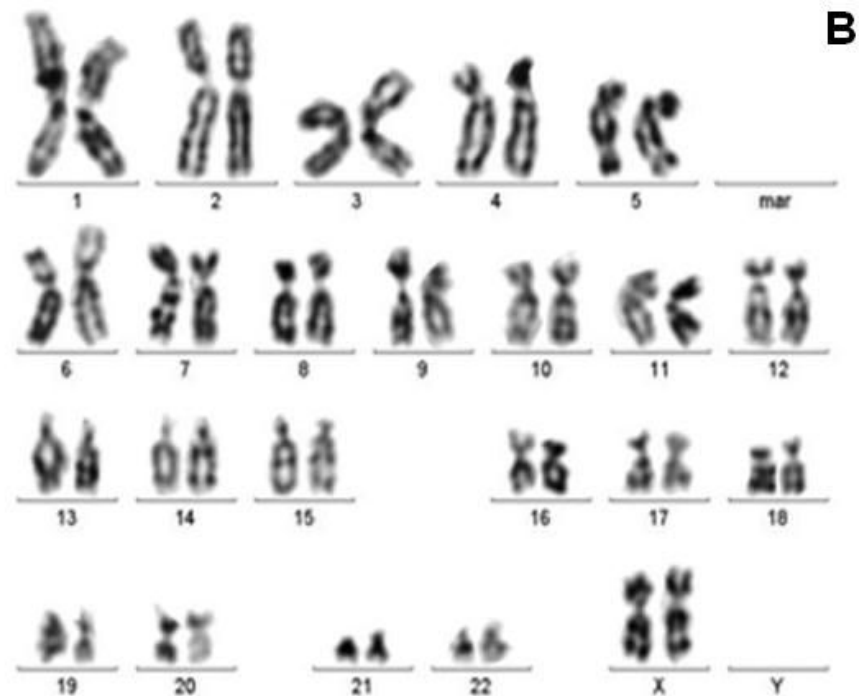
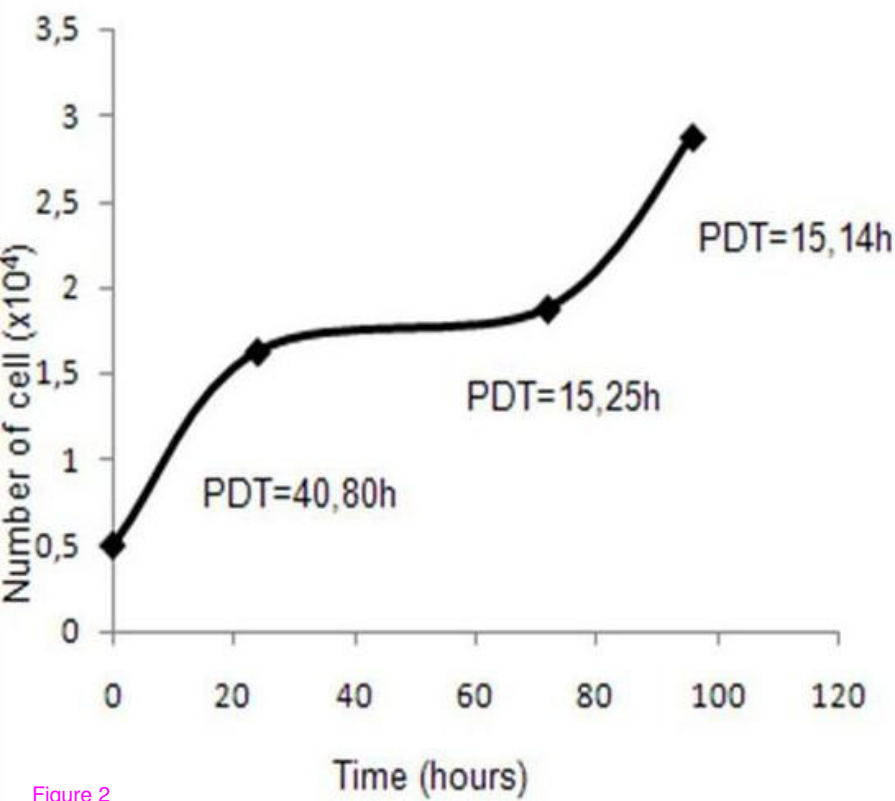
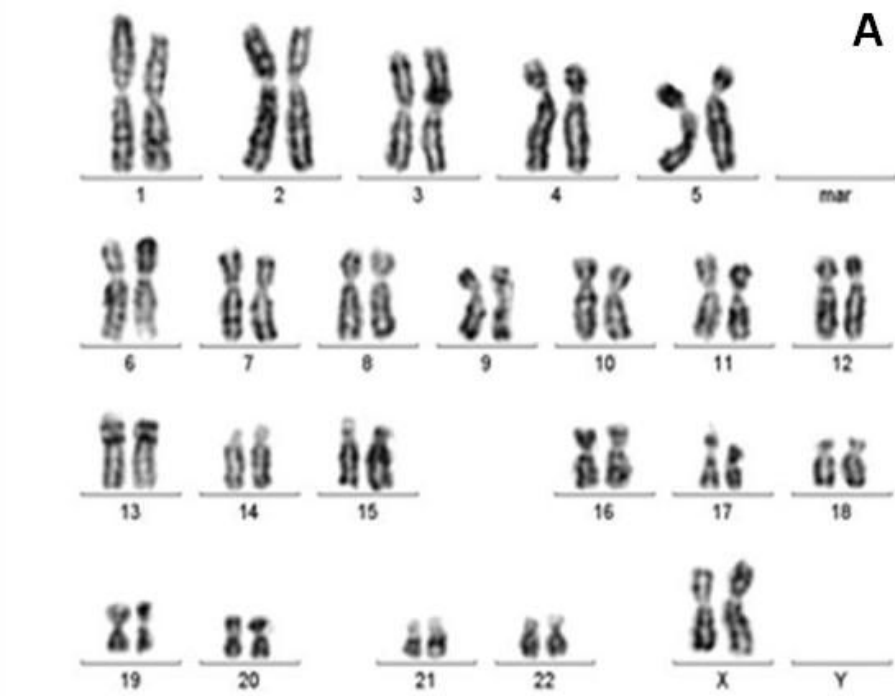
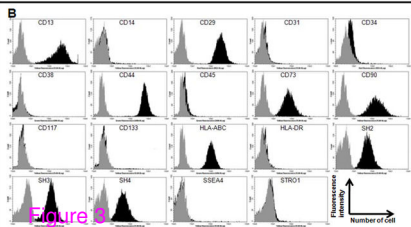
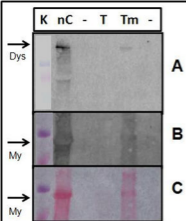


Figure 2

Marker	Commitment / Relevance	Human Fallopian Tube (after enzymatic digestion)		hMSCs (between 2nd and 11th passages)	
		Expression	% (labeled cells)	Expression	% (labeled cells)
CD13	MSC marker	Predominantly -	26,40	+	99.10
CD14	Monocyte marker	-	0,56	-	1.72
CD29	MSC / adherent marker	+	94,32	+	99.60
CD31	Endothelial	-	0,12	-	1.76
CD34	Hematopoietic SC factor	-	0,18	-	1.84
CD38	Differentiating Hematopoietic SC factor	NP	NP	-	0.06
CD44	MSC / adherent marker	+	95,24	+	99.54
CD45	Hematopoietic SC factor	NP	NP	-	1.62
CD73	MSC marker	-	3,50	+	98.36
CD90	MSC / adherent marker	-	0,40	+	98.32
CD117	Hematopoietic SC factor	NP	NP	-	1.42
CD133	Hematopoietic SC factor	NP	NP	-	3.18
HLA DR	HLA	NP	NP	-	1.36
HLA ABC	HLA	NP	NP	+	98.66
SH3	MSC marker	-	3,02	+	97.30
SSEA4	Embryonic stem cell	NP	NP	-	5.97
STRO1	MSC marker	-	2,80	-	2.42
SH2	MSC marker	-	4,00	+	97.10
SH4	MSC marker	-	3,32	+	93.05

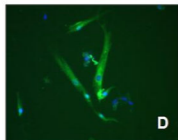




A

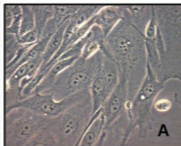
B

C

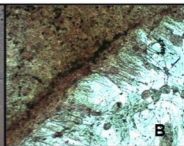


D

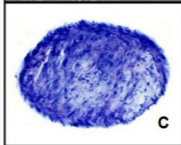
1



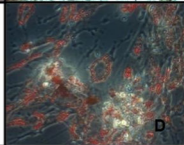
A



B



C



D

2

Figure 4